

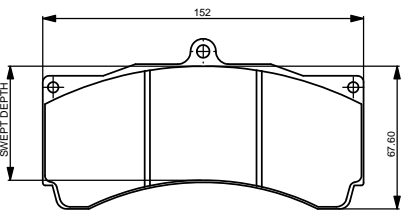
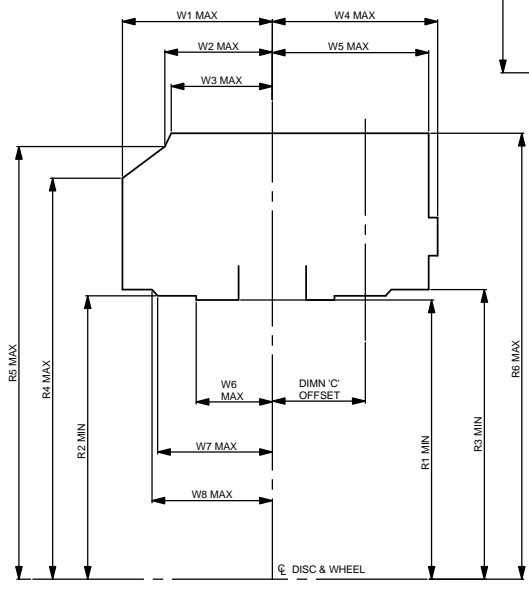
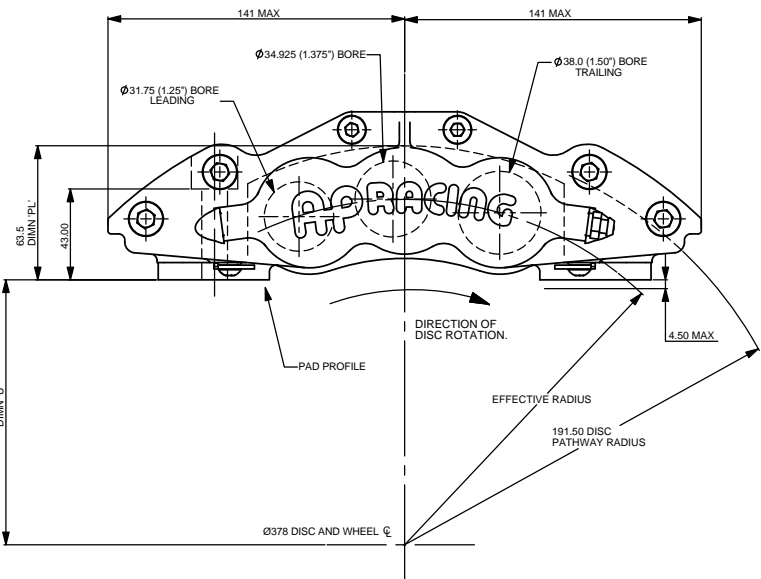
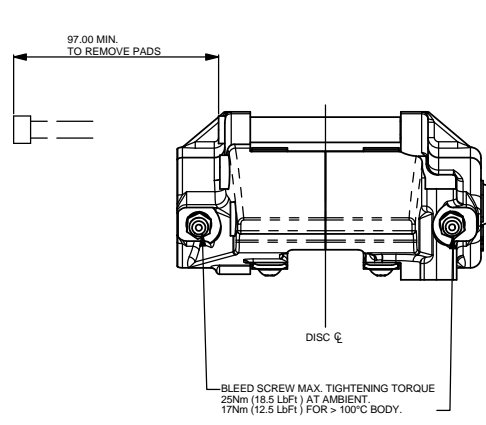
# A0 INSTALLATION DRAWING

IF THIS DOCUMENT IS PRINTED IN HARDCOPY, IT IS FOR INFORMATION USE ONLY AND THEREFORE IS NOT SUBJECT TO UPDATING CONTROLS. ALWAYS REFER TO SOLIDWORKS VIEWER FOR LATEST ISSUE



THIS DRAWING IS CONFIDENTIAL AND IS SUPPLIED ON THE EXPRESS CONDITION THAT IT SHALL NOT BE LOANED OR COPIED OR DISCLOSED TO ANY OTHER PERSON OR USED FOR ANY OTHER PURPOSE WITHOUT THE WRITTEN CONSENT OF AP RACING LTD.

AP Racing  
Wheler Road  
Coventry  
CV3 4LB  
Tel: +44 (0)24 7663 9595  
Fax: +44 (0)24 7663 9559  
e-mail: sales@ap racing.co.uk  
Web site: HTTP://www.ap racing.com



CP3894 FAMILY  
PAD THICKNESS 18.0mm  
PAD AREA 76.30cm<sup>2</sup>  
PAD VOLUME 100.1cm<sup>3</sup>

RADIAL PROFILE DATA																
PART No.	DISC DIA	DISC WIDTH	RAD 1	RAD 2	RAD 3	RAD 4	RAD 5	RAD 6	W1	W2	W3	W4	W5	W6	W7	W8
CP5060-22/23/24/25	378.0	32.0	132.25	134.20	137.15	189.90	204.90	211.20	71.00	50.90	47.90	78.25	74.00	36.10	54.30	57.00
CP5060-22/23/24/25	366.0	32.0	127.00	128.50	131.40	182.60	198.10	204.80	71.00	50.90	47.90	78.25	74.00	36.10	54.30	57.00
CP5060-22/23/24/25	356.0	32.0	121.25	123.20	126.15	178.90	193.90	200.20	71.00	50.90	47.90	78.25	74.00	36.10	54.30	57.00
CP5060-32/33/34/35	378.0	35.6	132.25	134.20	137.15	189.90	205.30	211.20	74.50	54.40	51.40	78.25	74.00	39.60	57.80	60.50
CP5060-32/33/34/35	356.0	35.6	121.25	123.20	126.15	178.90	194.30	200.20	74.50	54.40	51.40	78.25	74.00	39.60	57.80	60.50

**GENERAL DESCRIPTION:**  
THIS IS A 6 PISTON DIFFERENTIAL BORE CALIPER DESIGNED TO OPERATE ON A VENTILATED IRON DISC OF UP TO Ø378.0mm DIA BY 32.0mm TO 35.6mm THICK. STAINLESS STEEL BRIDGE PIPES AND PAD ABUTMENT WEAR PLATES ARE FITTED. SEALS ARE HIGH TEMPERATURE 'SEAL-IN-BORE' TYPE.

**TYPICAL APPLICATION:**  
BUDGET RACING SERIES

**TECHNICAL INFORMATION:**  
TOTAL PISTON AREA: 53.3cm<sup>2</sup>  
PISTON MATERIAL: STAINLESS STEEL  
BODY MATERIAL: CAST ALUMINIUM ALLOY  
ALL HYDRAULIC THREADS M10x1.0  
ASSEMBLY WEIGHT : 3.0 Kg ( WITHOUT PADS )

**INSTALLATION INFORMATION:**  
DISC & CALIPER MOUNTING TOLERANCES TO BE SUCH THAT THE DISC IS CENTRAL TO THE CALIPER TO WITHIN ±0.5mm

**KEY TO DIMENSIONS:**  
DIMENSION 'PL': TOP OF PAD MATERIAL TO MOUNTING BOSS FACE WITH PAD SITTING DOWN ON LEDGE.  
DIMENSION 'U': WHEEL CENTRE LINE TO CALIPER MOUNTING BOSS FACE (DISC Ø/2) - DIMENSION 'PL'.  
DIMENSION 'C': OFFSET - DISC CENTRE LINE TO MOUNTING HOLES.  
EFFECTIVE RAD: DISTANCE FROM WHEEL CENTRE LINE TO NOMINAL PISTON CENTRE LINE.

AP RACING TECHNICAL SECTION WILL BE PLEASED TO ADVISE ON THE MOST SUITABLE EQUIPMENT FOR ANY PARTICULAR APPLICATION.

**CALIPER PART NUMBERS**  
CP5060-22S4 - RIGHT HAND TRAILING (BEHIND AXLE)  
CP5060-23S4 - LEFT HAND TRAILING (BEHIND AXLE)  
CP5060-24S4 - RIGHT HAND LEADING (IN FRONT OF AXLE)  
CP5060-25S4 - LEFT HAND LEADING (IN FRONT OF AXLE)

CP5060-32S4 - RIGHT HAND TRAILING (BEHIND AXLE)  
CP5060-33S4 - LEFT HAND TRAILING (BEHIND AXLE)  
CP5060-34S4 - RIGHT HAND LEADING (IN FRONT OF AXLE)  
CP5060-35S4 - LEFT HAND LEADING (IN FRONT OF AXLE)

THE ADDITION OF AN 'L' SUFFIX DENOTES STAINLESS STEEL PISTONS RATHER THAN THE STANDARD ALUMINIUM ALLOY PISTONS  
EXAMPLE PART # - CP5060-22S(L) (SIDE FEED) 4 (4lb AKB SPRING) L (STAINLESS PISTONS)

**PADS**  
THE CORRECT PAD FAMILY NUMBER FOR THIS CALIPER IS CP3894.  
PADS SHOULD BE ORDERED SEPARATELY.

**REPLACEMENT SEAL KIT**  
SEAL KIT (HIGH TEMPERATURE) CP4518-EJG

CALIPER IDENTIFICATION CHART			
RHT	RIGHT HAND TRAILING	BEHIND AXLE	(AS DRAWN)
LHT	LEFT HAND TRAILING	BEHIND AXLE	
RHL	RIGHT HAND LEADING	IN FRONT OF AXLE	
LHL	LEFT HAND LEADING	IN FRONT OF AXLE	

CALIPER ASSEMBLY FAMILY No.	STROKE NO				DISC WIDTH	DISC DIAMETER	EFF RAD	DMN U	DIMN C
	RHT	LHT	RHL	LHL					
CP5060-	22	23	24	25	32.0	378.0	163.6	126	44.0
CP5060-	22	23	24	25	32.0	366.0	157.8	120	44.0
CP5060-	22	23	24	25	32.0	356.0	152.6	115	44.0
CP5060-	32	33	34	35	35.6	378.0	163.6	126	45.8
CP5060-	32	33	34	35	35.6	356.0	152.6	115	45.8

PAD RETAINING BOLTS SHOULD BE TIGHTENED TO A TORQUE OF 15Nm (11 Lbs Ft). IF POSSIBLE IT IS RECOMMENDED THAT THESE BOLTS ARE LOCKWIRED IN POSITION.

ISSUE No.	Alterations			Zone	Initials
	Date & No.	Particulars			
1	12/03/13 B6758	FIRST ISSUE		NJS	
2	20/07/15 B7564	CP5060-32/33/34/35 ADDED		THS	

SCALE 1:1 SHEET 1 OF 1

DRAWN N STEVENS

APPROVED

DERIVED FROM CP5060-1CD

TITLE  
6 PISTON CALIPER  
INSTALLATION DRAWING

DRG NO. CP5060-21CD